



Education
Partnership
Trust

High Expectations • Commitment • Ambition

Candidate Information Pack

Teacher of Maths (Numeracy Lead)

Burnley High School





A message from the Headteacher

Thank you for expressing an interest in the position of Teacher of Maths (Numeracy Lead) at Burnley High School. This is a special opportunity for an outstanding, ambitious and dynamic teacher to join a Good school at an exciting stage of its journey.

Burnley High School is a thriving, ambitious community that places the best interests of young people at the heart of everything we do. We are a smaller than average secondary school, part of Education Partnership Trust (EPT), serving the community of West Burnley and Padiham. As an established, successful school we have grown in size and popularity, with demand for places resulting in the school being oversubscribed. We have a fantastic student cohort and dedicated staff that thrive on a culture of high expectations.

In May 2017, the school was judged as 'Good' in all areas by Ofsted. A copy of the report can be downloaded from the School's website. Inspectors found our school to have a "polite, well-mannered students who are incredibly proud of their school", "relationships between teachers and pupils are positive and based on genuine respect and care" and that our "pupils have good attitudes to learning and are keen to succeed".

At Burnley High School, everyone is committed to providing the best educational experiences and opportunities for our students. Our vision is to ensure a world class education, addressing social disadvantage where it exists through high expectations and an ambitious curriculum. At the very heart of the school's work is a commitment to high quality teaching and learning and achievement for all: for our pupils to be safe, happy and successful developing as individuals into caring, responsible citizens who participate fully in school life and are proud of their achievements.

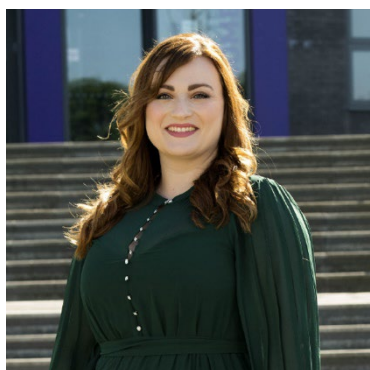
Every student at Burnley High School is encouraged to have ambitious goals and is responsible for creating a culture of high expectations and academic excellence. We support our students to become conscientious, high-achieving individuals, who are able to discover their talents and passions through the opportunities we provide. Our ethos revolves around ensuring that we provide the very best educational experiences and opportunities, both in and out of the classroom environment.

We are proud of our achievements at Burnley High School – our aspirational and exciting curriculum, our examination success, our ambitious opportunities for pupils' personal development, our charity work and our community involvement. We are committed to the pursuit of outstanding teaching and learning alongside the highest possible academic, personal and moral standards. This commitment is built upon a shared belief in hard work, self-reflection and a culture of respect and support for others.

Burnley High School is a successful 11 – 16 high school and over the past five years has achieved the following:

- Judged as Good across all four areas: Leadership and management, quality of teaching, outcomes and personal development and welfare.
- External outcomes in 2019 demonstrated good progress with a positive Progress 8 score.
- Established as the 'school of choice' in the local area, and oversubscribed in every year group.

To apply for this post, please follow the instructions on the Vacancies page on our website. For visits to the school or any other information, please contact enquiries@burnleyhigh.com



E. Starkey
Headteacher



**Education
Partnership
Trust**



I am delighted that you are considering a role within the EPT.

The EPT was established in 2012 as a high performing multi academy trust and approved academy sponsor, that delivers the very best educational experience for our pupils within an ethos of collaboration and excellence.

Wishing you all the best with your application.



Sharon Roscoe
Chief Executive

Our Vision

Creating outstanding schools which transform learning, lives and communities

Our Values

High Expectations

of ourselves, our pupils and our school community

Commitment

we are dedicated to raising standards and improving opportunities

Ambition

we constantly strive to improve by setting ourselves challenging goals



Job Advertisement

Teacher of Maths (Numeracy LEad)

| | |
|----------------------|-----------------------------------|
| Hours: | 32.5 |
| Weeks Worked: | All Year (Term Time) |
| Start Date: | 01/01/2024 |
| Salary: | Main Pay Scale plus TLR 2C |

Burnley High School wishes to appoint a hardworking, enthusiastic and committed Teacher of Maths who will act as Numeracy Lead to nurture a love of maths and driving up of numeracy standards. If you are experienced, enthusiastic, open to new ideas and have a flexible 'can do' approach, we would welcome an application from you.

The Job

- Implement and deliver an appropriately broad, balanced, relevant and differentiated curriculum for pupils.
- Monitor and support the overall progress and development of pupils as a teacher/form tutor.
- Facilitate and encourage a learning experience which provides pupils with the opportunity to achieve their individual potential.
- Contribute to raising standards of pupil attainment.
- Share and support the school's responsibility to provide and monitor opportunities for personal and academic growth.

What are the job requirements?

The successful candidate will:

- Be a qualified teacher (ideally with PGCE, GTP, B'ed, Cert Ed, BA with QTS).
- Demonstrate recent experience as a Maths Teacher.
- Possess the skills and determination to make a significant difference to the lives of students.
- Be proven to raise and maintain attainment levels, keeping standards high.
- Be an enthusiastic, highly motivated individual who leads by example.
- Demonstrate good communication and interpersonal skills with excellent behaviour management strategies.



Amongst the many benefits of working within the Trust you will receive:

- Employee cash back plan provided free by the Trust includes optical, dental, physio, diagnostics, health assessment, NHS prescription charges, hospital cover, discounted gym memberships plus lots more.
- 6 sessions of free counselling including CBT, wellbeing and bereavement.
- Cycle to work scheme.
- Access to government pension schemes.
- Free parking
- Training and development opportunities
- Personal development and promotion opportunities across the Trust
- Trust wide focus on staff wellbeing

Safeguarding

The Education Partnership Trust is committed to safeguarding its children; therefore, an enhanced DBS clearance will be undertaken for the successful applicant(s). The Trust (and its schools) are legally obligated to process a Disclosure and Barring Service (DBS) check before making appointments to relevant posts.

Incomplete application forms will not be shortlisted, if you need to discuss a reason for being unable to complete a section, please contact the recruitment team HR@ept-uk.com

Applications for this exciting post are to be made through <https://ept.face-ed.co.uk/vacancies>

Job Description

Teacher of Maths (Numeracy Lead)

| | |
|----------------------|-----------------------------------|
| Hours: | 32.5 |
| Weeks Worked: | All Year (Term Time) |
| Start Date: | 01/01/2024 |
| Salary: | Main Pay Scale plus TLR 2C |
| Reports to: | Head of Department |

Job Purpose

- To implement and deliver an appropriately broad, balanced, relevant and differentiated curriculum for pupils and to support a designated curriculum area as appropriate.
- To monitor and support the overall progress and development of pupils as a teacher/form tutor.
- To facilitate and encourage a learning experience which provides pupils with the opportunity to achieve their individual potential.
- To contribute to raising standards of pupil attainment.
- To share and support the Academy's responsibility to provide and monitor opportunities for personal and academic growth.

Areas of Responsibility

- Operational/Strategic Planning
- To assist in the development of appropriate syllabuses, resources, schemes of work, marking policies and teaching strategies in the subject area.
- To contribute to the subject area's Development Plan and its implementation.
- To attend all appropriate meetings.
- To plan and prepare courses and lessons.
- To contribute to the whole Academy's planning activities

Curriculum Provision

- To assist the Head of Department to ensure that the curriculum area provides a range of teaching which complements the Academy's Strategic Objectives.

ROLE OF SECONDARY SUBJECT TEACHER

Staff Development

- To take part in the Academy's staff development programme by participating in arrangements for further training and professional development.
- To continue personal development in the relevant areas including subject knowledge and teaching methods.
- To engage actively in the Performance Management Review process.
- To ensure the effective/efficient deployment of classroom support.
- To work as a member of a designated team and to contribute positively to effective working relations within the Academy.

Quality Assurance

- To help to implement Academy quality procedures and to adhere to those.
- To contribute to the process of monitoring and evaluation of the subject area in line with agreed Academy procedures, including evaluation against quality standards and performance criteria.
- To seek/implement modification and improvement where required.
- To review from time to time methods of teaching and programmes of work.
- To take part, as may be required, in the review, development and management of activities relating to the curriculum, organisation and pastoral functions of the Academy. Management of Information
- To maintain appropriate records and to provide relevant accurate and up-to-date information for

Management Information Systems (MIS), registers etc.

- To complete the relevant documentation to assist in the tracking of pupils.
- To track pupil progress and use information to inform teaching and learning

Communications

- To communicate effectively with the parents of pupils as appropriate.
- Where appropriate, to communicate and cooperate with persons or bodies outside the

Academy.

- To follow agreed policies for communications in the Academy.

Management of Resources

- To contribute to the process of the ordering and allocation of equipment and materials.
- To assist the Head of Department to identify resource needs and to contribute to the efficient/effective use of physical resources.

- To cooperate with other staff to ensure a sharing and effective usage of resources to the benefit of the Academy, subject area and the pupils.

Pastoral System

- To be a form tutor to an assigned group of pupils.
- To promote the general progress and well-being of individual pupils and of the form tutor group as a whole.
- To liaise with the Subject Leader to ensure the implementation of the Academy's Pastoral System.
- To register pupils, accompany them to assemblies, encourage their full attendance at all lessons and their participation in other aspects of Academy life.
- To evaluate and monitor the progress of pupils and keep up-to-date pupil records as may be required.
- To contribute to the preparation of Action Plans and progress files and other reports
- To alert the appropriate staff to problems experienced by pupils and to make recommendations as to how these may be resolved.
- To communicate as appropriate, with the parents of pupils and with persons or bodies outside the Academy concerned with the welfare of individual pupils, after consultation with the appropriate staff.
- To contribute to PSHE and Citizenship and enterprise according to Academy policy.
- To apply the Behaviour Management systems so that effective learning can take place

Teaching

- To teach pupils according to their educational needs, including the setting and marking of work to be carried out by the pupil in the Academy and elsewhere.
- To assess, record and report on the attendance, progress, development and attainment of pupils and to keep such records as are required.
- To provide, or contribute to, oral and written assessments, reports and references relating to individual pupils and groups of pupils.
- To ensure that ICT, Literacy and Numeracy are reflected in the teaching/learning experience of pupils.
- To undertake a designated programme of teaching.
- To ensure a high quality learning experience for pupils which meets internal and external quality standards.
- To prepare and update subject materials.
- To use a variety of delivery methods which will stimulate learning appropriate to pupil needs and demands of the syllabus.
- To maintain discipline in accordance with the Academy's procedures and to encourage good practice with regard to punctuality, behaviour, standards of work and homework.



- To undertake assessment of pupils as requested by external examination bodies, the subject area and Academy procedures.
- To mark, grade and give written/verbal and diagnostic feedback as required.

Other Specific Duties

- To continue personal development as agreed at appraisal.
- To engage actively in the performance review process.
- To address the appraisal targets set by the line manager each Autumn Term.
- To undertake any other duty as specified by the School Teachers' Pay and Conditions Body (STPCB) not mentioned in the above.
- To play a full part in the life of the Academy community, to support its distinctive aim and ethos and to encourage staff and pupils to follow this example.
- To actively promote the Academy's policies.
- To comply with the Academy's Health and Safety policy and undertake risk assessments as appropriate.
- To show a record of excellent attendance and punctuality.
- To adhere to the Academy's Dress Code.
- Paid Lunch Duties

Note

This Job Description forms part of the contract of employment of the person appointed to this post. It reflects the position at the present time only and may be changed at management's discretion in the future. As a general term of employment, the Trust may affect any necessary change in job content or may require the post holder to undertake other duties, at any location in the Trust's service, provided that such changes are appropriate to the employee's remuneration and status.

As a term of your contract of employment, the Trust reserves the right to vary your hours of work and require you to work outside the range of your "typical working arrangements" specified in your Statement of Particulars. The Trust reserves the right at its discretion to affect this condition of your employment. Should this be necessary you will be given reasonable notice of any proposed changes.

Person Specification

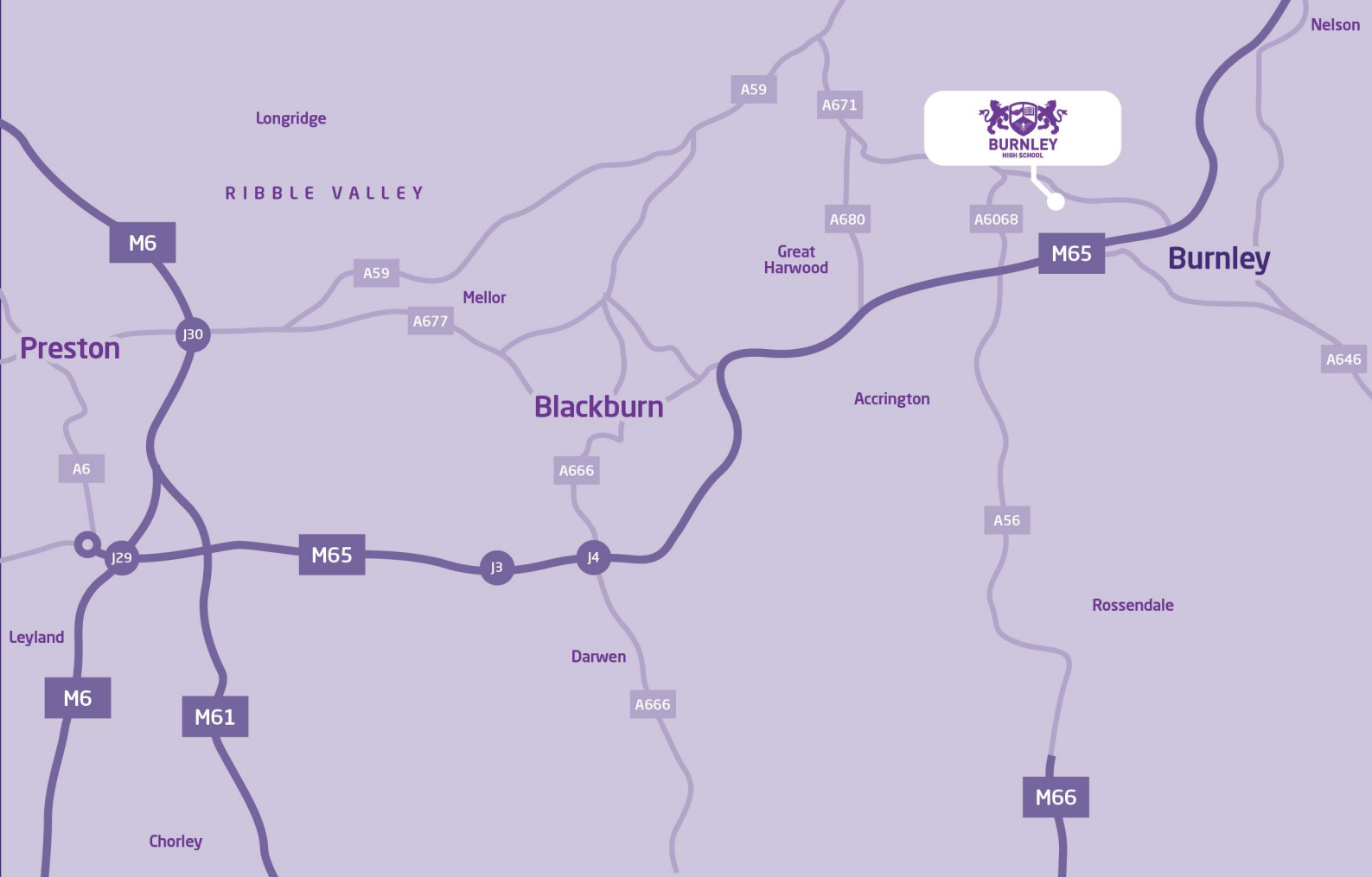
Teacher of Maths (Numeracy Lead)

Hours: 32.5
Weeks Worked: All Year (Term Time)
Start Date: 01/01/2024
Salary: Main Pay Scale
Reports to: Head of Department

Person Specification

| School: | Burnley High School | |
|--|---|-------------------------|
| Job Title: | Teacher of Maths (Numeracy Lead) | |
| Grade: | Main Teaching Scale / Upper Scale | |
| No | CATEGORIES | Essential/ Desirable |
| QUALIFICATIONS AND TRAINING | | |
| 1. | Qualified Teacher Status. | E |
| 2 | Qualified to at least degree level in a Mathematics based subject/or adequate post degree conversion course | E |
| KNOWLEDGE, SKILLS AND UNDERSTANDING | | |
| 1 | Recent and relevant CPD activities | E |
| 2 | Experience of teaching across the 11-16 age range | D |
| 3 | Proven record or evidence from teaching practice of potential to help students reach high standards of learning and achievement | E |
| 4 | Consistently good/outstanding teacher as measured by student outcomes | E |
| 5 | Knowledge and understanding of strategies to safeguard students and staff | E |
| 6 | Understanding and use of strategies to raise achievement | E |
| 7 | High standard of subject knowledge | E |
| 8 | Knowledge of current developments in Teaching and Learning | D |
| Learning and Developing | | |
| 1 | Shows commitments to own and other's professional and self-development | E |

| | | |
|---------------------|---|---|
| 2 | Has a good understanding of the wider educational agenda | E |
| 3 | Excellent organisational skills with the ability to work under pressure and re-prioritise workload when needed | D |
| 4. | Desire to contribute to and be involved in the wider life of the school | D |
| Team Work | | |
| 1 | Ability to promote and develop positive relationships within and beyond the school | E |
| 2 | Understands the need for effective relationships with parents, carers, partners and the community which enhance and support students learning | E |
| 3 | A high level of self-awareness – knows strengths and weaknesses and can relate to difficult personality types well | E |
| 4 | Flexible approach to changing work tasks | E |
| Technical | | |
| 1 | Excellent ICT skills for teaching | E |
| 2 | Effective use of ICT in management and data handling | D |
| SAFEGUARDING | | |
| 1 | Has knowledge and understanding of safeguarding and child protection | E |



Contact

Burnley High School
Byron Street, Burnley. Lancashire. BB12 6NX

01282 681950
enquiries@burnleyhigh.com
www.burnleyhigh.com

Twitter @Burnley_High



An Education Partnership Trust School